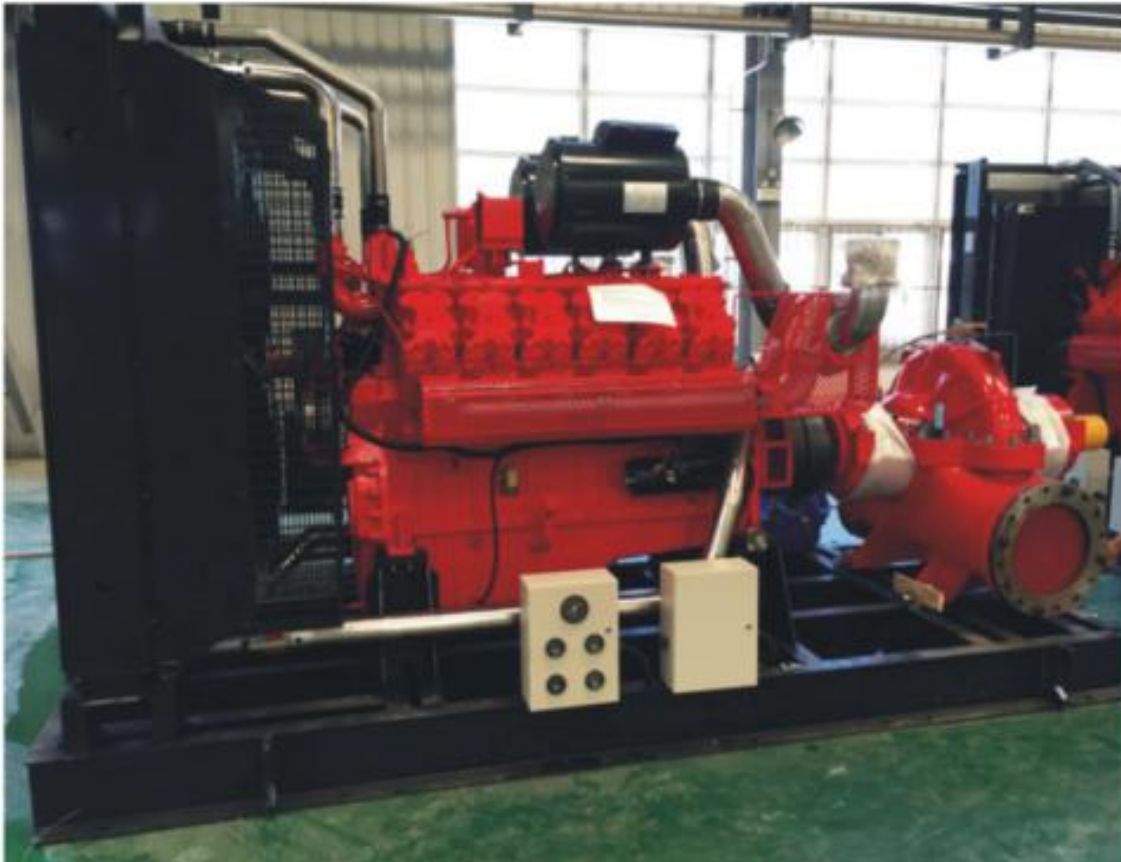


Diesel Engine Driven Fire Pump



The series can be specially used for the emergency fire control, especially for wind supply and drainage at the unexpected cases there are no ignition or power supply. They are compact structure, complete function, easy maintenance, safe and reliable usage as a new generation diesel engine driven fire pumps featured with higher quality, higher performance, higher reliability. It has a high automation level, humanized simple operation, remote network control and constant voltage fire control, which can effectively protect firemen's personal safety and improve the fire extinguishing efficiency. Its fire system can be timely started when there is a fire or the power supply is cut off. The series can be widely used for petrol, petrochemical, mining, power plants and ports. It is a high quality and super performance fire pump which has been exported to Nigeria, Philippines.

Fire pumps certificates:

CCCF

FIRST-GRADE FIRE ENGINEERING CERTIFICATE

Exported Countries: Nigeria

Technical parameter list

系列号 No.	型号 Type	性能参数 Performance Data			柴油机 Driver		质量 Weight (t)
		流量 Flowrate (L/S)	出口压力 Outlet Pressure (MP)	轴功率 P(KW)	型号 Type	功率 P(KW)	
第 1 系列	XBC5/10-TB	10	0.5	10.72	495C	23.5	1.5
	XBC8/10-TB		0.8	14.50	495D1	30	1.5
	XBC10/10-TB		1.0	21.45	495ZD-1	36	1.5
	XBC12/10-TB		1.2	21.8	495ZD-1	36	1.5
	XBC15/10-TB		1.5	27.76	495Q1	51.5	1.5
	XBC18/10-TB		1.8	33.96	495Q1	51.5	1.5
	XBC20/10-TB		2.0	38.47	495Q1	51.5	1.5
第 2 系列	XBC5/15-TB	15	0.5	12.51	495C	23.5	1.5
	XBC8/15-TB		0.8	19.19	495D1	30	1.5
	XBC10/15-TB		1.0	26.22	495ZD-1	36	1.5
	XBC12/15-TB		1.2	31.60	495Y2	43	1.5
	XBC15/15-TB		1.5	40.13	K4100K1	61.2	2
	XBC18/15-TB		1.8	49.05	LRC4105ZG	68	2
	XBC20/15-TB		2.0	55.53	LR4110ZG	90	2
第 3 系列	XBC5/20-TB	20	0.5	15.99	495C	23.5	2
	XBC8/20-TB		0.8	26.76	49512	39	2
	XBC10/20-TB		1.0	32.42	K4100K1	61.2	2
	XBC12/20-TB		1.2	40.23	K4100K1	61.2	2
	XBC15/20-TB		1.5	52.05	LR4110ZG	90	2.1
	XBC18/20-TB		1.8	62.80	LR4110ZG	90	2.1
	XBC20/20-TB		2.0	68.11	LRC6105G	95	2.2
第 4 系列	XBC5/30-TB	30	0.5	26.63	49512	39	2
	XBC8/30-TB		0.8	39.58	K4100K1	61.2	2.1
	XBC10/30-TB		1.0	49.04	LR41105ZG	70	2.1
	XBC12/30-TB		1.2	60.68	LR4110ZG	90	2.2
	XBC15/30-TB		1.5	74.83	LR6105ZG	115	2.2
	XBC18/30-TB		1.8	89.61	LR6110ZG	132	2.2
	XBC20/30-TB		2.0	99.88	LR6110ZWG	150	2.2
第 5 系列	XBC5/40-TB	40	0.5	36.42	K4100K1	61.2	2
	XBC8/40-TB		0.8	58.33	LR4110ZG	90	2.1
	XBC10/40-TB		1.0	64.50	LR4110ZG	90	2.1
	XBC12/40-TB		1.2	79.77	LR6105ZG	115	2.2
	XBC15/40-TB		1.5	105.17	LR6110ZWG	150	2.2
	XBC18/40-TB		1.8	131.82	X6135ZB	210.3	3
	XBC20/40-TB		2.0	154.65	X6135ZB	210.3	3

系列号 No.	型号 Type	性能参数 Performance Data			柴油机 Driver		质量 Weight (t)
		流量 Flowrate (L/S)	出口压力 Outlet Pressure (MP)	轴功率 P(KW)	型号 Type	功率 P(KW)	
第 6 系列	XBC5/50-TB	50	0.5	33.78	495Q1	51.5	2
	XBC8/50-TB		0.8	55.36	LR4110ZG	90	2.1
	XBC10/50-TB		1.0	72.24	LR6105ZG	115	2.2
	XBC12/50-TB		1.2	89.32	LR6110ZG	132	2.2
	XBC15/50-TB		1.5	115.32	X6315ZB	177.9	3
	XBC18/50-TB		1.8	142.63	X6315ZLB	210.3	3
	XBC20/50-TB		2.0	163.77	12V135AB	242.6	3.3
第 7 系列	XBC6/60-TB	60	0.6	53	LR4105ZG	70	2.1
	XBC8/60-TB		0.8	68.6	LRC6105G	95	2.2
	XBC10/60-TB		1.0	85.7	LR6110ZG	132	2.2
	XBC12/60-TB		1.2	102.9	LR6110ZWG	150	2.2
	XBC15/60-TB		1.5	128.6	X6315ZLB	210.3	3
	XBC18/60-TB		1.8	154.3	X6315ZLB	210.3	3
	XBC20/60-TB		2.0	171.4	12V135AB	242.6	3.3
第 8 系列	XBC5/70-TB	70	0.5	50	LR4105ZG	70	2.1
	XBC8/70-TB		0.8	80	LR6105ZG	115	2.2
	XBC10/70-TB		1.0	100	LR6110ZWG	150	2.2
	XBC12/70-TB		1.2	120	X6135ZB	177.9	3
	XBC15/70-TB		1.5	140	X6315ZLB	210.3	3
	XBC18/70-TB		1.8	160	12V135AB	242.6	3.3
	XBC20/70-TB		2.0	200	12V135JAB	307.4	3.4
第 9 系列	XBC5/80-TB	80	0.5	57.1	LR4110ZG	90	2.1
	XBC8/80-TB		0.8	91.4	LR6110ZG	132	2.2
	XBC10/80-TB		1.0	114.3	X6135ZB	177.9	3
	XBC12/80-TB		1.2	137.1	X6315ZLB	210.3	3
	XBC15/80-TB		1.5	160	12V135AB	242.6	3.3
	XBC18/80-TB		1.8	182.9	12V135JAB	279.5	3.3
	XBC20/80-TB		2.0	228.6	12V135AJAB	323.6	3.4
第 10 系列	XBC5/90-TB	90	0.5	64.3	LR4110ZG	90	2.1
	XBC8/90-TB		0.8	102.9	LR6110ZWG	150	2.2
	XBC10/90-TB		1.0	128.6	X6135ZB	177.9	3
	XBC12/90-TB		1.2	154.3	X6315ZLB	210.3	3
	XBC15/90-TB		1.5	192.9	12V135AJAB	294.2	3.4
	XBC18/90-TB		1.8	231.4	12V135AJAB	323.6	3.4
	XBC20/90-TB		2.0	257.1	W12V135AZLB	356.4	3.5

系列号 No.	型号 Type	性能参数 Performance Data			柴油机 Driver		质量 Weight (t)
		流量 Flowrate (L/S)	出口压力 Outlet Pressure (MP)	轴功率 P(KW)	型号 Type	功率 P(KW)	
第11系列	XBC5/100-TB	100	0.5	71.4	LR6105ZG	115	2.2
	XBC8/100-TB		0.8	114.4	X6135ZB	177.9	3
	XBC10/100-TB		1.0	142.9	X6135ZLB	210.3	3
	XBC12/100-TB		1.2	171.4	12V135AB	242.6	3.3
	XBC15/100-TB		1.5	214.3	12V135JZB	307.4	3.4
	XBC18/100-TB		1.8	257.1	W12V135AZLB	356.4	3.5
	XBC20/100-TB		2.0	285.7	G6190ZLG-2	418	6.1
第12系列	XBC5/110-TB	110	0.5	78.6	LR6105ZG	115	2.2
	XBC8/110-TB		0.8	125.7	X6135ZB	177.9	3
	XBC10/110-TB		1.0	157.1	X76135ZLB	210.3	3
	XBC12/110-TB		1.2	188.6	12V135JZB	279.5	3.4
	XBC15/110-TB		1.5	235.7	12V135AJZB	323.6	3.4
	XBC18/110-TB		1.8	282.9	6190ZLC	450	5.6
	XBC20/110-TB		2.0	341.1	6190ZLC	450	5.6
第13系列	XBC7/120-TB	120	0.7	120	X6135ZB	177.9	3
	XBC8/120-TB		0.8	137.1	X6135ZLB	210.3	3
	XBC10/120-TB		1.0	171.4	12V135AB	242.6	3.3
	XBC12/120-TB		1.2	205.7	12V135JZB	307.4	3.4
	XBC15/120-TB		1.5	257.1	W12V135AZLB	356.4	3.5
	XBC18/120-TB		1.8	308.6	B6190ZCA-R	400	5.6
	XBC20/120-TB		2.0	342.7	B6190ZCA-R	400	5.6
第14系列	XBC7/130-TB	130	0.7	130	X6135ZB	177.9	3
	XBC8/130-TB		0.8	148.6	X6135ZLB	210.3	3
	XBC10/130-TB		1.0	185.7	12V135AB	242.6	3.3
	XBC12/130-TB		1.2	222.9	12V135JZB	307.4	3.4
	XBC15/130-TB		1.5	278.6	G6190ZLG-2	418	6.1
	XBC18/130-TB		1.8	334.3	Z8V190C-1	471	5.9
	XBC20/130-TB		2.0	371.4	Z8V190C-1	518	5.9
第15系列	XBC5/140-TB	140	0.5	100	LR6105ZG	132	2.2
	XBC8/140-TB		0.8	160	X6135ZLB	210.3	3
	XBC10/140-TB		1.0	200	12V135JZB	307.4	3.4
	XBC12/140-TB		1.2	240	12V135AJZB	323.6	3.4
	XBC15/140-TB		1.5	300	6190ZLC	450	5.6
	XBC18/140-TB		1.8	360	8190ZLCZ-2R	500	6.8
	XBC20/140-TB		2.0	400	G6190ZLC	540	6.1

系列号 No.	型号 Type	性能参数 Performance Data			柴油机 Driver		质量 Weight (t)
		流量 Flowrate (L/S)	出口压力 Outlet Pressure (MP)	轴功率 P(KW)	型号 Type	功率 P(KW)	
第16系列	XBC5/150-TB	150	0.5	107.1	LR6110ZWG	150	2.2
	XBC8/150-TB		0.8	171.4	12V135AB	242.6	3.3
	XBC10/150-TB		1.0	214.1	12V135JZB	307.6	3.4
	XBC12/150-TB		1.2	257.1	W12V135AZLB	356.4	3.5
	XBC15/150-TB		1.5	321.4	6190ZLC	450	5.6
	XBC18/150-TB		1.8	385.7	Z12V190BC2-2	560	6.9
	XBC20/150-TB		2.0	428.6	8190ZLCZ-1R	600	6.9
第17系列	XBC5/160-TB	160	0.5	114.3	X6135ZB	177.9	3
	XBC8/160-TB		0.8	182.9	12V135JZB	279.5	3.4
	XBC10/160-TB		1.0	228.6	6190ZLC	330	5.6
	XBC12/160-TB		1.2	274.3	G6190ZLG-2	380	6.1
	XBC15/160-TB		1.5	342.9	Z8V190C-1	471	6
	XBC18/160-TB		1.8	411.4	Z12V190BC2-2	560	6.9
	XBC20/160-TB		2.0	457.1	Z12V190BC7-1	662	6.9
第18系列	XBC5/170-TB	170	0.5	121.4	X6135ZLB	191.2	3
	XBC8/170-TB		0.8	194.3	12V135AJZB	294.2	3.5
	XBC10/170-TB		1.0	242.9	4190ZLC-3	330	4.6
	XBC12/170-TB		1.2	291.4	G6190ZLC2-2	418	6.1
	XBC15/170-TB		1.5	364.3	Z8V190C-1	518	6
	XBC18/170-TB		1.8	437.1	8190ZLCZ-1R	600	6.8
	XBC20/170-TB		2.0	485.7	8190ZLC-3	650	6.8
第19系列	XBC5/180-TB	180	0.5	126.12	4190ZLC1-2	180	4.5
	XBC8/180-TB		0.8	201.80	6190ZLCA-2	300	5.56
	XBC10/180-TB		1.0	252.25	6190ZLCA-3	360	5.56
	XBC12/180-TB		1.2	302.70	6190ZLC	450	5.56
	XBC15/180-TB		1.5	378.38	Z12V190BC2-2	560	6.9
	XBC18/180-TB		1.8	454.06	G12V190ZL-2	650	7.1
第20系列	XBC6/190-TB	190	0.6	159.79	4190ZLC-1	270	4.5
	XBC8/190-TB		0.8	213.01	6190ZLCA-2	300	5.56
	XBC10/190-TB		1.0	266.24	G6190ZLC-2	380	6.1
	XBC12/190-TB		1.2	319.52	8190ZLC-2	500	6.8
	XBC15/190-TB		1.5	399.41	Z12V190BC2-2	560	6.9
	XBC18/190-TB		1.8	479.86	8190ZLC	720	7
第21系列	XBC5/200-TB	200	0.6	159.79	4190ZLC-1	270	4.5
	XBC8/200-TB		0.8	213.01	6190ZLCA-1	330	5.46
	XBC10/200-TB		1.0	266.24	6190ZLC-1	400	5.56
	XBC12/200-TB		1.2	319.52	G6190ZLC-3	480	6.1
	XBC15/200-TB		1.5	399.41	G12V190PZL-2	600	9.7

系列号 No.	型号 Type	性能参数 Performance Data			柴油机 Driver		质量 Weight (t)
		流量 Flowrate (L/S)	出口压力 Outlet Pressure (MP)	轴功率 P(KW)	型号 Type	功率 P(KW)	
第22系列	XBC6/220-TB	220	0.6	184.96	4190ZLC-1	270	5.46
	XBC8/220-TB		0.8	246.14	6190ZLCA-3	360	5.46
	XBC10/220-TB		1.0	308.43	6190ZLC	450	5.56
	XBC12/220-TB		1.2	369.91	Z12V190BC2-2	560	6.9
	XBC15/220-TB		1.5	462.44	G12V190ZL-2	650	6.9
第23系列	XBC6/250-TB	250	0.6	210.23	6190ZLCA-2	300	5.46
	XBC8/250-TB		0.8	280.27	6190ZLC-1	400	5.56
	XBC10/250-TB		1.0	350.31	8190ZLC-2	500	6.8
	XBC12/250-TB		1.2	420.46	G12V190PZL-2	600	9.7
	XBC15/250-TB		1.5	525.57	G12V190PZL-1	740	9.7
第24系列	XBC6/280-TB	280	0.6	235.44	190ZLCA-3	360	5.46
	XBC8/280-TB		0.8	313.92	8190ZLC-2	500	6.7
	XBC10/280-TB		1.0	392.44	Z12V190BC2-2	560	6.9
	XBC12/280-TB		1.2	470.88	8190ZLC	720	6.8
	XBC15/280-TB		1.5	588.6	G12V190PZL	900	9.7
第25系列	XBC6/300-TB	300	0.6	252.21	G6190ZLC-2	380	6.1
	XBC8/300-TB		0.8	336.39	8190ZLC-2	500	6.8
	XBC10/300-TB		1.0	420.46	G12V190PZL-2	600	9.8
	XBC12/300-TB		1.2	504.53	8190ZLC	720	6.9
	XBC15/300-TB		1.5	630.69	G12V190PZL	900	9.8
第26系列	XBC6/320-TB	320	0.6	269.03	6190ZLC-1	400	5.56
	XBC8/320-TB		0.8	358.77	Z12V190BC2-2	560	6.9
	XBC10/320-TB		1.0	448.41	G12V190ZL-2	650	7
	XBC12/320-TB		1.2	538.16	G12V190ZL-1	800	7
	XBC15/320-TB		1.5	672.67	A12V190ZL-2	960	11.1
第27系列	XBC6/350-TB	350	0.6	294.3	6190ZLC	450	5.56
	XBC8/350-TB		0.8	392.4	Z12V190BC2-2	560	6.9
	XBC10/350-TB		1.0	490.5	G12V190PZL-1	740	9.7
	XBC12/350-TB		1.2	588.6	G12V190PZL	900	9.9
	XBC15/350-TB		1.5	735.75	A12V190ZL-3	1100	11.1
第28系列	XBC6/380-TB	380	0.6	319.57	6190ZLC	450	5.56
	XBC8/380-TB		0.8	426.03	G12V190PZL-2	600	9.7
	XBC10/380-TB		1.0	532.29	G12V190ZL-1	800	7.1
	XBC12/380-TB		1.2	639.04	G12V190PZL	900	9.9
	XBC15/380-TB		1.5	798.43	A12V190ZL	1200	11.1

系列号 No.	型号 Type	性能参数 Performance Data			柴油机 Driver		质量 Weight (t)
		流量 Flowrate (L/S)	出口压力 Outlet Pressure (MP)	轴功率 P(KW)	型号 Type	功率 P(KW)	
第29系列	XBC6/400-TB	400	0.6	336.39	8190ZLC	500	6.9
	XBC8/400-TB		0.8	448.41	G12V190ZL-2	650	7
	XBC10/400-TB		1.0	560.54	G12V190ZL-1	800	7.2
	XBC12/400-TB		1.2	672.67	A12V190ZL-1	960	11.2
	XBC15/400-TB		1.5	840.81	A12V190ZL	1200	11.2
第30系列	XBC6/450-TB	450	0.6	378.57	Z12V190BC2-2	560	7
	XBC8/450-TB		0.8	504.53	G12V190PZL-1	740	9.8
	XBC10/450-TB		1.0	630.69	G12V190PZL	900	10
	XBC12/450-TB		1.2	756.14	A12V190ZL-3	1100	11.2
	XBC15/450-TB		1.5	945.93	H12V190ZL-1	1400	11.4
第31系列	XBC6/500-TB	500	0.6	420.46	G12V190PZL-2	600	9.9
	XBC8/500-TB		0.8	560.54	G12V190ZL-1	800	7.1
	XBC10/500-TB		1.0	700.73	G12V190ZL	1000	7.2
	XBC12/500-TB		1.2	840.81	A12V190ZL	1200	11.2
	XBC15/500-TB		1.5	1051.01	H12V190ZL-3	1500	11.5
第32系列	XBC6/550-TB	550	0.6	462.14	G12V190ZL-2	650	7
	XBC8/550-TB		0.8	616.66	G12V190PZL	900	9.8
	XBC10/550-TB		1.0	770.77	A12V190ZL-3	1100	11.3
第33系列	XBC6/550-TB	600	0.6	504.53	G12V190PZL-1	740	9.8
	XBC8/550-TB		0.8	672.67	A12V190ZL-1	960	11
	XBC10/550-TB		1.0	840.81	A12V190ZL	1200	11.3
第34系列	XBC6/550-TB	650	0.6	546.51	G12V190ZL-1	800	7
	XBC8/550-TB		0.8	728.79	A12V190ZL-3	1100	11
	XBC10/550-TB		1.0	910.96	H12V190ZL-1	1400	11.5
第35系列	XBC6/550-TB	700	0.6	588.6	G12V190PZL	900	9.8
	XBC8/550-TB		0.8	784.8	A12V190ZL-3	1100	11
	XBC10/550-TB		1.0	981	H12V190ZL-1	1400	11.5
第36系列	XBC6/550-TB	750	0.6	630.69	G12V190ZL	900	9.8
	XBC8/550-TB		0.8	840.71	A12V190ZL	1200	11
	XBC10/550-TB		1.0	1051.01	H12V190ZL-3	1500	11.5
第37系列	XBC6/550-TB	800	0.6	672.67	A12V190ZL-3	960	11
	XBC8/550-TB		0.8	896.93	H12V190ZL-1	1400	11.2
	XBC10/550-TB		1.0	1121.13	H12V190ZL	1740	11.5
第38系列	XBC6/550-TB	850	0.6	714.76	A12V190ZL-3	1100	11
	XBC8/550-TB		0.8	952.94	H12V190ZL-1	1400	11.2
	XBC10/550-TB		1.0	1191.24	H12V190ZL	1740	11.5
第39系列	XBC6/550-TB	900	0.6	756.74	A12V190ZL-3	1100	11
	XBC8/550-TB		0.8	1009.09	H12V190ZL-3	1500	11.2
	XBC10/550-TB		1.0	1261.26	H12V190ZL	1740	11.5

Vehicle fire pump



Certificate: CCCF

Exported area: Russia

Technical Parameter List

项目 performance 型号 Model		低压工况 Normal pressure functions				高(中)压工况 High/normal pressure functions				高(中)低压联合工况 High/middle/normal pressure functions						引水 时间 Priming water time (S)	重量 Weight (kg)
		流量	出口 压力	泵转速	功率	流量	出口 压力	泵转速	功率	低压 流量	低压出 口压力	高(中) 压流量	高(中) 压出口 压力	泵转速	功率		
		Q (l/s)	P (Mpa)	Revolu- -tion (rpm)	N (kW)	Q (l/s)	P (Mpa)	Revolu- -tion (rpm)	N (kW)	Q (l/s)	P (Mpa)	Q (l/s)	P (Mpa)	Revolu- -tion (rpm)	N (kW)		
高低压 消防泵 High/normal pressure fire pump	CB40.10/6.30-TB	30	1.0	4250	≤66	6	4.0	3890	≤78	15	1.0	6	4.0	3860	≤86	17	145
	CB40.10/6.50-TB	50	1.0	4370	≤95	6	4.0	4100	≤100	25	1.75	6	3.5	5200	≤135	25	165
	CB40.12/25.80-TB	80	1.2	4770	≤210	25	4.0	4340	≤225	40	1.2	20	4.0	4334	≤225	73	310
中低压 消防泵 Middle normal pressure fire pump	CB20.10/15.30-TB	30	1.0	4210	≤67	15	2.0	4317	≤69	15	1.0	15	2.0	4224	≤84	25.4	160
	CB20.10/20.40-TB	40	1.0	4430	≤88	20	2.0	4270	≤88	20	1.0	20	2.0	4260	≤90	25.4	160
	CB20.10/25.50-TB	50	1.0	4400	≤104	25	2.0	4400	≤112	25	1.0	25	2.0	4400	≤120	26.4	182
	CB20.10/30.60-TB	60	1.0	4625	≤128	30	2.0	4680	≤145	30	1.0	30	2.0	4565	≤124	26.4	182
	CB20.10/35.70-TB	70	1.0	4760	≤154	35	2.0	4330	≤138	35	1.0	35	2.0	4500	≤145	30.4	190
	CB20.10/40.80-TB	80	1.0	3760	≤155	40	2.0	3690	≤167	40	1.0	30	2.0	3520	≤160	50	285
中(低)压 消防泵 Middle normal pressure fire pump	CB20/80-TB	60	1.2	3020	≤105	80	2.0	3885	≤223							76	175
	CB18/50-TB	50	1.0	4300	≤75	50	1.8	5680	≤156							26.4	125
	CB18/40-TB	40	1.0	4300	≤62	40	1.8	5488	≤122							25.4	100
	CB18/15-TB	30	1.0	4350	≤60	15	1.8	5150	≤77							17	120
	CB16/30-TB	40	1.0	4300	≤62	30	1.6	4900	≤70							25	100
	CB12/60-TB	60	1.2	4950	≤116	50	1.8	5560	≤140							26.4	143
	CB12/80-TB	80	1.2	4020	≤160											50	233
	CB10/100-TB	100	1.0	4130	≤187	70	1.3	4000	≤170							50	233
	CB12/130-TB	130	1.2	2925	≤237	91	1.56	3062	≤242							56	270
CB10/170-TB	170	1.0	2860	≤237											79	410	

1、泵输入转速可根据用户需要，用泵所带增速箱来调节，可选用的增速比有三组；

1) 70L/s以下：34/27、37/24、40/21、42/19、44/17

2) 80-100L/s：37/31、41/27、47/21、43/25、45/23

3) 120-150L/s：45/41、59/27、57/29、49/37、53/33

2、CB18/15-TB为单级中压泵，可用调节转速来实现低压功能；

3、CB18/50-TB为单级中压泵，可用调节转速来调节压力，泵转速由4300r/m变化至5680r/m，则压力从1.0MPa变化至1.8MPa；

4、以上参数试验条件：吸深3m，吸水管长5m，吸水管径：

CB40.10/6.30-TB、CB18/15-TB为Φ110，CB2.10/15.30-TB、CB20.10/20.40-TB、CB18/40-TB为Φ125。

CB20.10/25.15-TB、CB20.10/30.60-TB、CB20.10/35.70-TB、CB18/50-TB、CB12/60-TB为Φ132。

CB40.12/25.80-TB、CB20.10/40.80-TB、CB20/80-TB、CB12/80-TB、CB14/70-TB、CB10/100-TB为Φ150。

CB10/130-TB为Φ250 CB10/170-TB为两根Φ200、CB40.12/25.80-TB为Φ200。

1、The input rotational speed of the pump can be adjusted with the gear box in rear of the pump, the optional gear rate;

1) 70L/s up: 34/27, 37/24, 40/21, 42/19, 44/17

2) 80-100L/s: 37/31, 41/27, 47/21, 43/25, 45/23

3) 120-150L/s: 45/41, 59/27, 57/29, 49/37, 53/33

2、CB18/15-TB is a single stage middle pressure pump, the normal pressure function can be achieved by adjusting the rotational speed of the pump.

3、CB18/50-TB is a single stage middle pressure pump, the normal pressure function can be achieved by adjusting the rotational speed of the pump. The rotational speed of the pump change from 4300 rpm to 5680rpm, and the pressure change from 1.0 Mpa to 1.8 Mpa.

4、the above parameter test condition: suction deep 3m, suction pipe length 5m, suction pipe diameter:

CB40.10/6.30-TB, CB18/15-TB is Φ110, CB2.10/15.30-TB, CB20.10/20.40-TB, CB18/40-TB is Φ125.

CB20.10/25.15-TB, CB20.10/30.60-TB, CB20.10/35.70-TB, CB18/50-TB, CB12/60-TB is Φ132.

CB40.12/25.80-TB, CB20.10/40.80-TB, CB20/80-TB, CB12/80-TB, CB14/70-TB, CB10/100-TB is Φ150.

CB10/130-TB is Φ250 CB10/170-TB is two root Φ200, CB40.12/25.80-TB is Φ200.